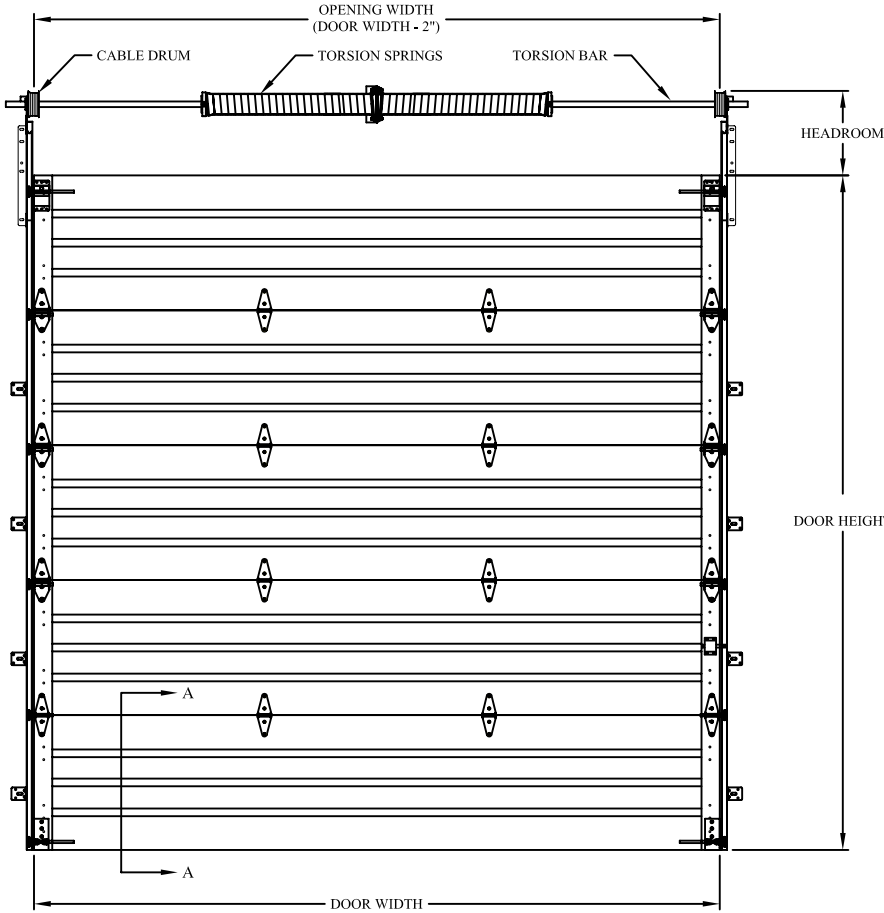


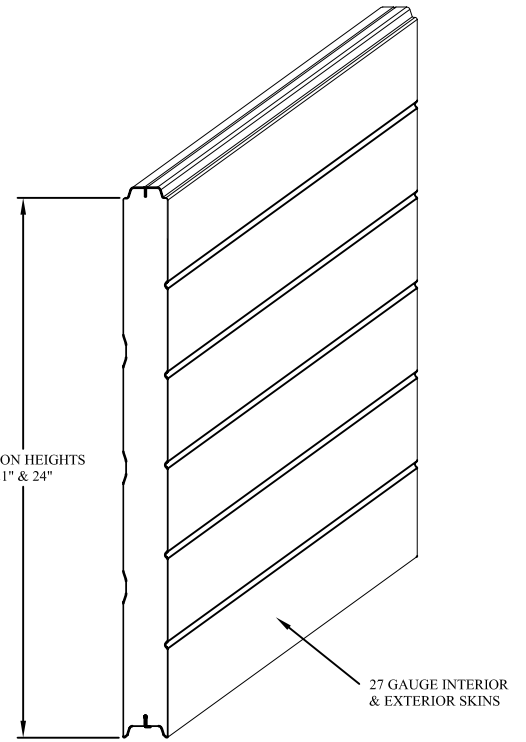
MODEL 2700



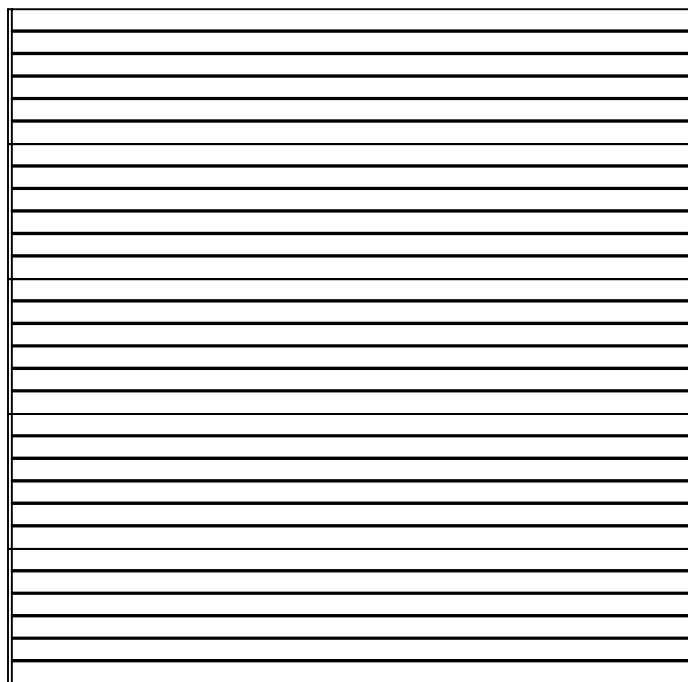
GARAGE DOORS



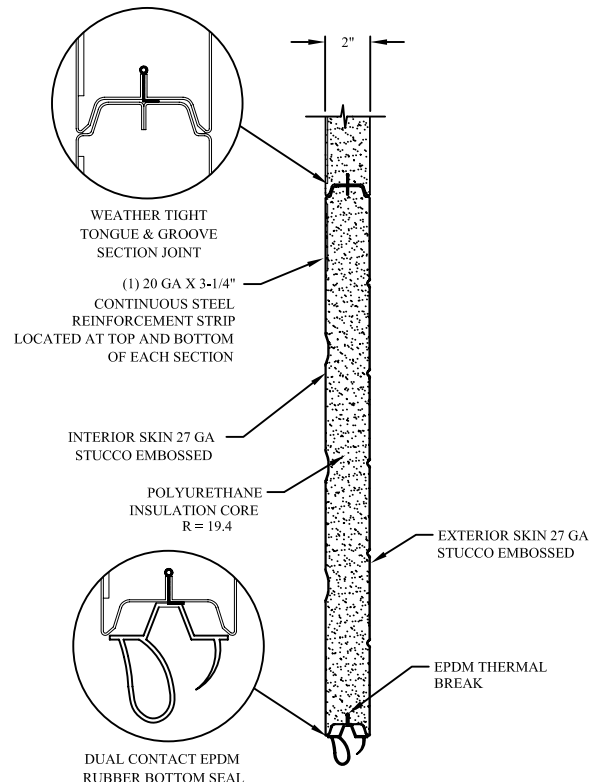
INTERIOR ELEVATION



ISOMETRIC PROFILE



EXTERIOR ELEVATION

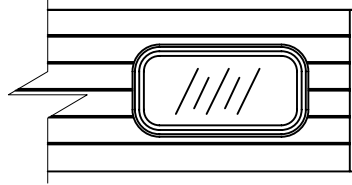


SECTION A-A

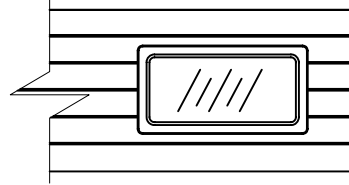
MODEL 2700



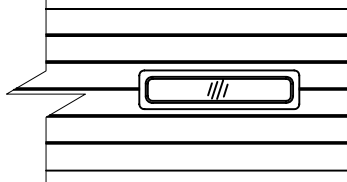
GARAGE DOORS



26" x 13 1/2" DOUBLE PANE INSULATED PLEXI-GLASS



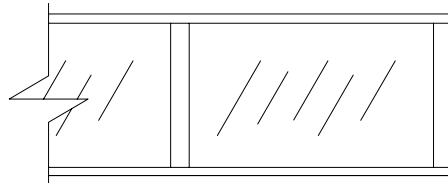
24" x 12" WINDOW W/ INSULATED GLASS



24" X 6" DOUBLE PANE INSULATED PLEXI-GLASS

DOOR WIDTH	MAX No. WINDOWS	DOOR WIDTH	MAX No. WINDOWS
8'2"	2	21'2"	6
9'2"	2	22'2"	6
10'2"	3	23'2"	6
11'2"	3	24'2"	6
12'2"	3	25'2"	7
13'2"	4	26'2"	7
14'2"	4	27'2"	7
15'2"	4	28'2"	7
16'2"	4	29'2"	7
17'2"	5	30'2"	8
18'2"	5	31'2"	8
19'2"	5	32'2"	8
20'2"	6		

NOTE: CHART ABOVE INDICATES MAXIMUM NUMBER OF WINDOWS PER SECTION.



ALUMINUM FULLVIEW SECTION WITH 1/8" DSB GLASS OR INSULATED GLASS

DOOR WIDTH	DOOR HEIGHTS																	
	7'1"	8'1"	9'1"	10'1"	11'1"	12'1"	13'1"	14'1"	15'1"	16'1"	17'1"	18'1"	19'1"	20'1"	21'1"	22'1"	23'1"	24'1"
8'2" - 12'2"	4	4	5	5	6	6	7	7	8	8	9	9	10	10	11	11	12	12
12'4" - 16'2"	2	2	3	3	4	4	5	5	6	6	7	7	8	8	9	9	10	10
16'4" - 24'2"	2	2	2	2	2	2	2	2	2	2	2	2	2	2	2	2	2	2

NOTE: CHART ABOVE INDICATES MAXIMUM NUMBER OF ALUMINUM FULLVIEW SECTIONS PER DOOR SIZE.

DOOR WIDTH	MAX No. PANELS	DOOR WIDTH	MAX No. PANELS
8'2"	2	17'2"	5
9'2"	2	18'2"	5
10'2"	3	19'2"	5
11'2"	3	20'2"	6
12'2"	3	21'2"	6
13'2"	4	22'2"	6
14'2"	4	23'2"	6
15'2"	4	24'2"	6
16'2"	4		

NOTE: CHART ABOVE INDICATES MAXIMUM NUMBER OF PANELS PER SECTION.

SECTION ARRANGEMENT CHART

GARAGE DOORS

Door Height	21" Bottom	21" Intermediate	24" Bottom	24" Intermediate
7'0"	1	3		
7'3"		3	1	
7'6"		2	1	1
7'9"		1	1	2
8'0"				4
8'3"	Not Available			
8'6"	Not Available			
8'9"	1	4		
9'0"		4	1	
9'3"		3	1	1
9'6"		2	1	2
9'9"		1	1	3
10'0"			1	4
10'3"	Not Available			
10'6"	1	5		
10'9"		5	1	
11'0"		4	1	1
11'3"		3	1	2
11'6"		2	1	3
11'9"		1	1	4
12'0"			1	5
12'3"	1	6		
12'6"		6	1	
12'9"		5	1	1
13'0"		4	1	2
13'3"		3	1	3
13'6"		2	1	4
13'9"		1	1	5
14'0"			1	6
14'0"	1	7		
14'3"		7	1	
14'6"		6	1	1
14'9"		5	1	2
15'0"		4	1	3
15'3"		3	1	4
15'6"		2	1	5
15'9"		1	1	6
15'9"	1	8		
16'0"			1	7
16'0"		8	1	
16'3"		7	1	1
16'6"		6	1	2
16'9"		5	1	3
17'0"		4	1	4
17'3"		2	1	5
17'6"		2	1	6
17'9"		1	1	7
18'0"			1	8
18'3"		7	1	2
18'6"		6	1	3
18'9"		5	1	4
19'0"		4	1	5
19'3"		3	1	6
19'6"		2	1	7
19'9"		1	1	8
20'0"			1	9
22'0"			1	10
24'0"			1	11